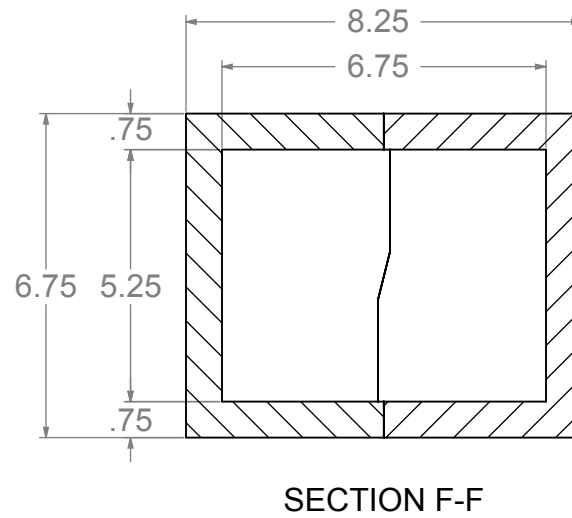
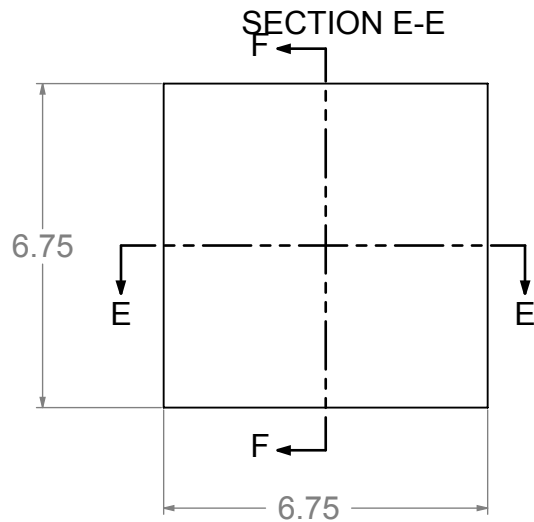
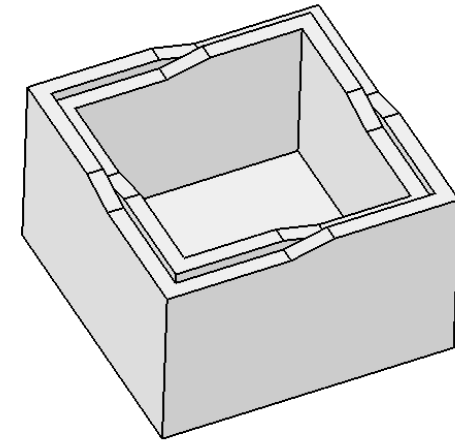
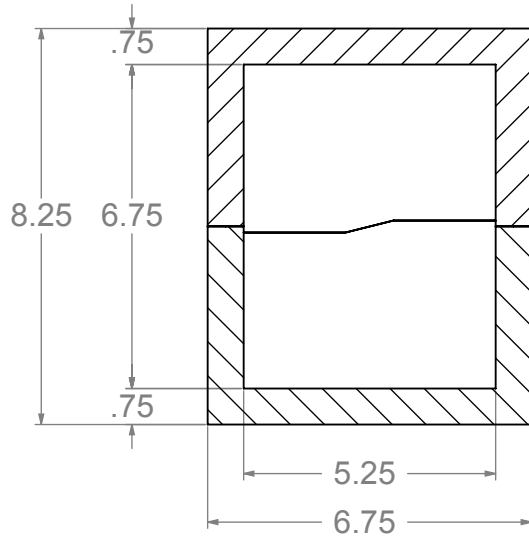


| | | REVISIONS | | | |
|------|------|-------------|------|----------|--|
| ZONE | REV. | DESCRIPTION | DATE | APPROVED | |
| | | | | | |



STANDARD EPS TOLERANCES
FOR DENSITY 1.12 TO 3.0 PCF

| DIM. INCH(MM) | TOL. INC(MM) |
|------------------------|----------------|
| 0.0 - 6.0(152) | +/- .039 (1) |
| 6.0(152) - 12.0 (305) | +/- .06 (1.5) |
| 12.0(305) - 24.0(610) | +/- .098 (2.5) |
| 24.0(610) - 48.0(1220) | +/- .12 (3) |
| 48.0(1220) - GREATER | +/- .20 (5) |

PROPRIETARY AND CONFIDENTIAL

THE INFORMATION CONTAINED
IN THIS DRAWING IS THE SOLE
PROPERTY OF marko foam
production ANY REPRODUCTION
IN PART OR AS A WHOLE WITHOUT
THE WRITTEN PERMISSION OF
marko foam production IS PROHIBITED.

MATERIAL
EPS 1.25 PCF

FINISH

DO NOT SCALE DRAWING

| | NAME | DATE |
|-----------|----------------|----------|
| DRAWN | | |
| CHECKED | | |
| ENG APPR. | Ilir Bordoniqi | 08/09/10 |
| MFG APPR. | | |
| Q.A. | | |

COMMENTS:
V - 95

marko
foam products inc



IC - 186

| SIZE | DWG. NO. | REV. |
|-----------|---------------------|--------------|
| A | CM 1110 - K57 - 4/2 | |
| SCALE:1:4 | WEIGHT: | SHEET 1 OF 1 |