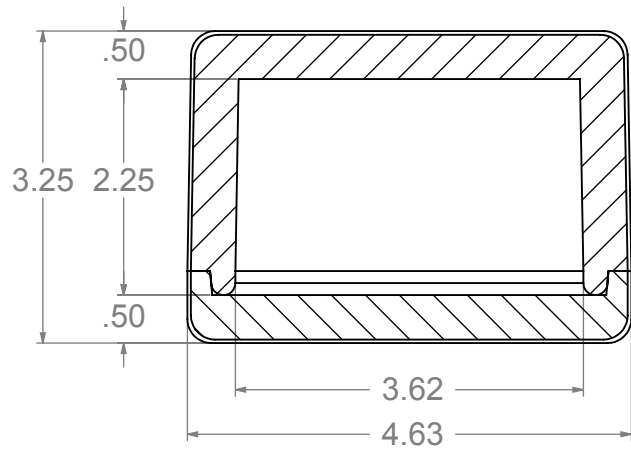
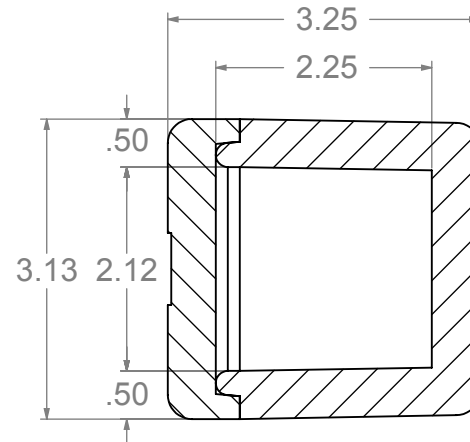
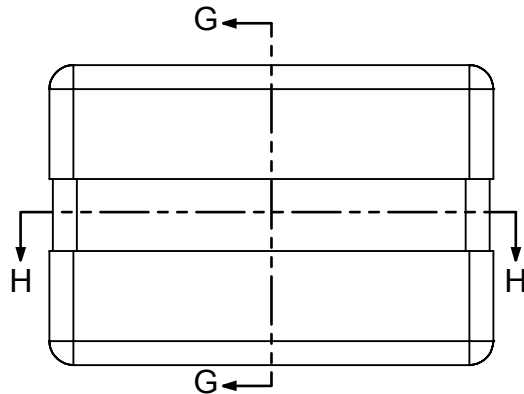
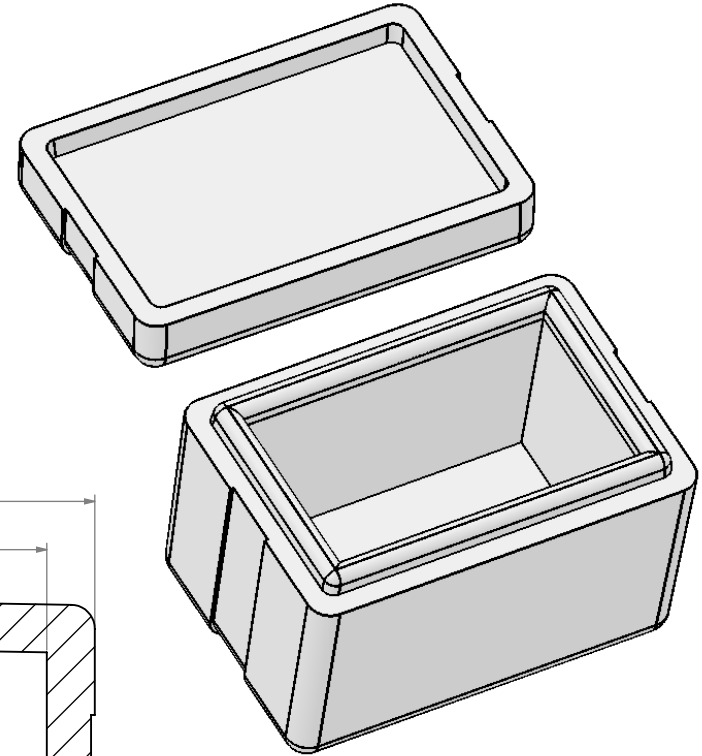


		REVISIONS			
ZONE	REV.	DESCRIPTION	DATE	APPROVED	



SECTION H-H



SECTION G-G

**STANDARD EPS TOLERANCES  
FOR DENSITY 1.12 TO 3.0 PCF**

DIM. INCH(MM)	TOL. INC(MM)
0.0 - 6.0(152)	+/- .039 (1)
6.0(152) - 12.0 (305)	+/- .06 (1.5)
12.0(305) - 24.0(610)	+/- .098 (2.5)
24.0(610) - 48.0(1220)	+/- .12 (3)
48.0(1220) - GREATER	+/- .20 (5)

<b>PROPRIETARY AND CONFIDENTIAL</b> THE INFORMATION CONTAINED IN THIS DRAWING IS THE SOLE PROPERTY OF marko foam production ANY REPRODUCTION IN PART OR AS A WHOLE WITHOUT THE WRITTEN PERMISSION OF marko foam production IS PROHIBITED. MATERIAL <b>EPS 1.25 PCF</b> FINISH DO NOT SCALE DRAWING	NAME	DATE	
	DRAWN		
	CHECKED		<b>IC - 16</b>
	ENG APPR.	Ilir Bordoniqi 08/19/10	
	MFG APPR.		
COMMENTS:	V <sub>B</sub> - 21 V <sub>L</sub> - 8		SIZE DWG. NO. <b>A</b> CM 2264 - K710 - 12/6
	SCALE:1:2	WEIGHT:	SHEET 1 OF 1