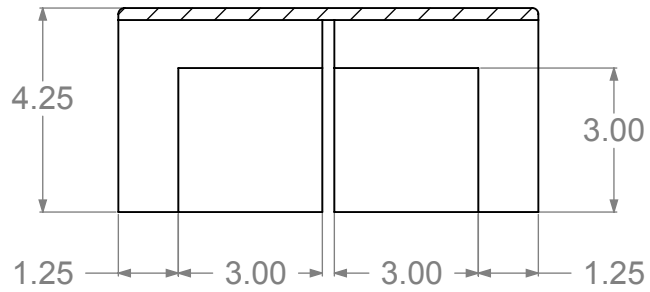
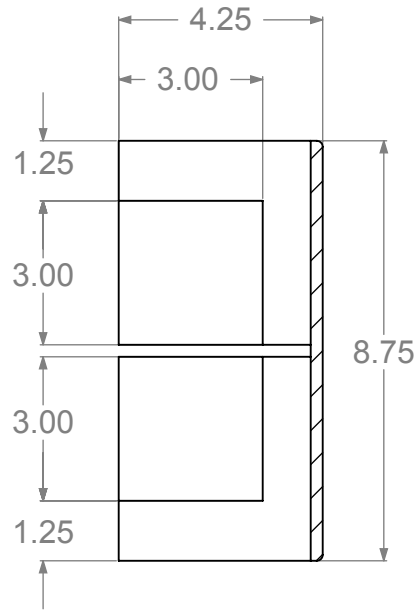
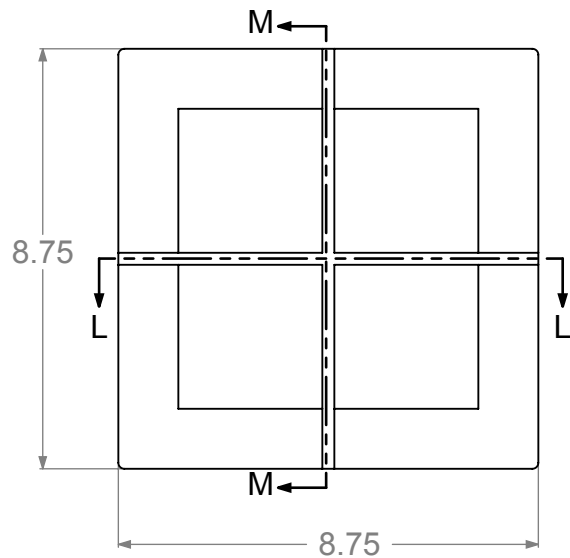


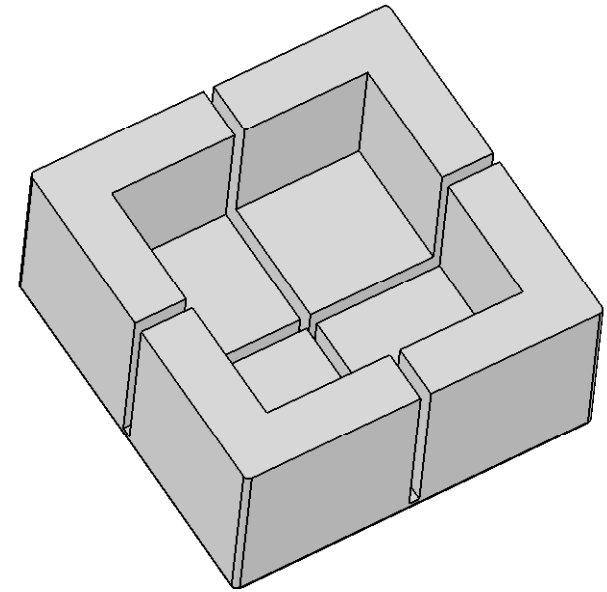
| | | REVISIONS | | | |
|------|------|-------------|------|----------|--|
| ZONE | REV. | DESCRIPTION | DATE | APPROVED | |
| | | | | | |



SECTION L-L





SECTION M-M



STANDARD EPS TOLERANCES
FOR DENSITY 1.12 TO 3.0 PCF

| DIM. INCH(MM) | TOL. INC(MM) |
|------------------------|----------------|
| 0.0 - 6.0(152) | +/- .039 (1) |
| 6.0(152) - 12.0 (305) | +/- .06 (1.5) |
| 12.0(305) - 24.0(610) | +/- .098 (2.5) |
| 24.0(610) - 48.0(1220) | +/- .12 (3) |
| 48.0(1220) - GREATER | +/- .20 (5) |

| | | | | | | |
|--|--------------------------|--------------|--|---|----------------------------------|------|
| PROPRIETARY AND CONFIDENTIAL THE INFORMATION CONTAINED IN THIS DRAWING IS THE SOLE PROPERTY OF marko foam production ANY REPRODUCTION IN PART OR AS A WHOLE WITHOUT THE WRITTEN PERMISSION OF marko foam production IS PROHIBITED. | NAME | DATE |  marko foam products inc |  | | |
| | DRAWN | | | | | |
| | CHECKED | | | | | |
| | ENG APPR. Ilir Bordoniqi | 09/07/10 | | | | |
| | MFG APPR. | | | | | |
| Q.A. | | | CB-220 | | | |
| COMMENTS: | | V-200 | | | SIZE DWG. NO. | REV. |
| DO NOT SCALE DRAWING | | | | | A CM2104A - K1014 - 12/48 | |
| | | SCALE:1:4 | WEIGHT: | SHEET 1 OF 1 | | |